



THE RURAL MUNICIPALITY OF MACDONALD

BY-LAW NO. 1/25

BEING A BY-LAW OF THE RURAL MUNICIPALITY
to create a reduced speed zones adjacent to schools
within the municipality.

WHEREAS Section 98.1 of The Highway Traffic Act and the Reduced-Speed School Zones Regulation No. 136/2013 authorize a council to pass by-laws establishing the reduced maximum permitted speed for vehicles being driven on a highway within a school zone within the geographic boundaries of a municipality; and

WHEREAS the Council of the Rural Municipality of Macdonald deems it advisable and in the best interests of the Municipality to establish school zones with a reduced maximum speed for vehicles.

NOW THEREFORE the Council of the Rural Municipality of Macdonald duly assembled, enacts as follows:

1. This By-Law may be called the “Reduced-Speed School Zone By-Law”.

Interpretation

2. For the purposes of this By-Law, “highway”, “reduced-speed school zone”, “school”, “school property”, “traffic control device” and “vehicle” shall have the same meanings as set out in the Highway Traffic Act and the Reduced-Speed School Zones Regulation No. 136/2013.

Established of reduced-speed school zones

3. The following portions of highways as shown on Schedule A are designated as a reduced-speed school zones with reduced maximum permitted speed A:

- (a) Name of School: La Salle School, 43 Rue Beaudry, La Salle

Highways included in the reduced-speed school zone:

That portion of Rue Beaudry beginning where the northern limit of Lagace Drive meets Rue Beaudry and ending where the southern limit of First Avenue meets Rue Beaudry.

- (b) Name of School: J.A. Cuddy School, 5 Main Street, Sanford

Highways included in the reduced speed school zone:

- i. That portion of Main Street beginning where PR 334 meets Mandan Drive continuing in a northwesterly direction 150 metres from the northwest boundary of the school property;
- ii. That portion of Parker Avenue beginning where Main Street meets Parker Avenue and continuing southwest direction and ending where Parker Avenue meets Mellow Street; and
- iii. That portion of Wheatland Street beginning where Wheatland Street meets Main Street continuing in a northeasterly direction and ending where Wheatland Street meets Lynwood Avenue.

- (c) Name of School: Sanford Collegiate, 130 Blythefield Road, Sanford

Highways included in the reduced speed school zone:

- i. That portion of Blythefield Road beginning where River Crescent meets Blythefield Road continuing in a southerly direction and ending 150 metres from the southeast boundary of the school property.
- (d) Name of School: Oak Bluff Community School, 155 Bur Oak Boulevard, Oak Bluff

Highways included in the reduced speed school zone:

- i. That portion of Bur Oak Boulevard beginning 150 metres south of the southwest boundary of the school property continuing in a northerly direction for 150 metres from the northwest boundary of the school property.
- (e) Name of School: Starbuck School, 40 Arena Road, Starbuck

Highways included in the reduced speed school zone:

- ii. That portion of Arena Road beginning where Birch Street meets Arena Road continuing in a northerly direction and ending at the northeast boundary of the school property.
- iii. That portion of River Avenue beginning where River Road meets Arena Avenue continuing in an easterly direction 150 metres from the east boundary of the school property.

Maximum permitted speed within reduced-speed school zones

- 4. The maximum permitted speed for vehicles being driven in a reduced-speed school zone on a highway is 30 km/h.

Times when reduced-speed school zones apply

- 5. (A) The reduced maximum permitted speeds established under section 4 apply within a reduced-speed school zone from 7:30 a.m. to 5:30 p.m. Monday to Friday from September 1, to June 30.
(B) The reduced maximum permitted speeds established under section 4 apply at all times within a reduced-speed school zone.
- 6. The Municipality shall identify a reduced-speed school zone with traffic control devices that comply with the Reduced-Speed School Zones Regulation No. 136/13.
- 7. That By-Law No. 25/22 be hereby repealed.

DONE AND PASSED by the Council of the Rural Municipality of Macdonald, in Council duly assembled, at Sanford, Manitoba this 11th day of March, A.D., 2025.

THE RURAL MUNICIPALITY OF MACDONALD

Original Signed by

“B. Erb”

Brad Erb
Reeve

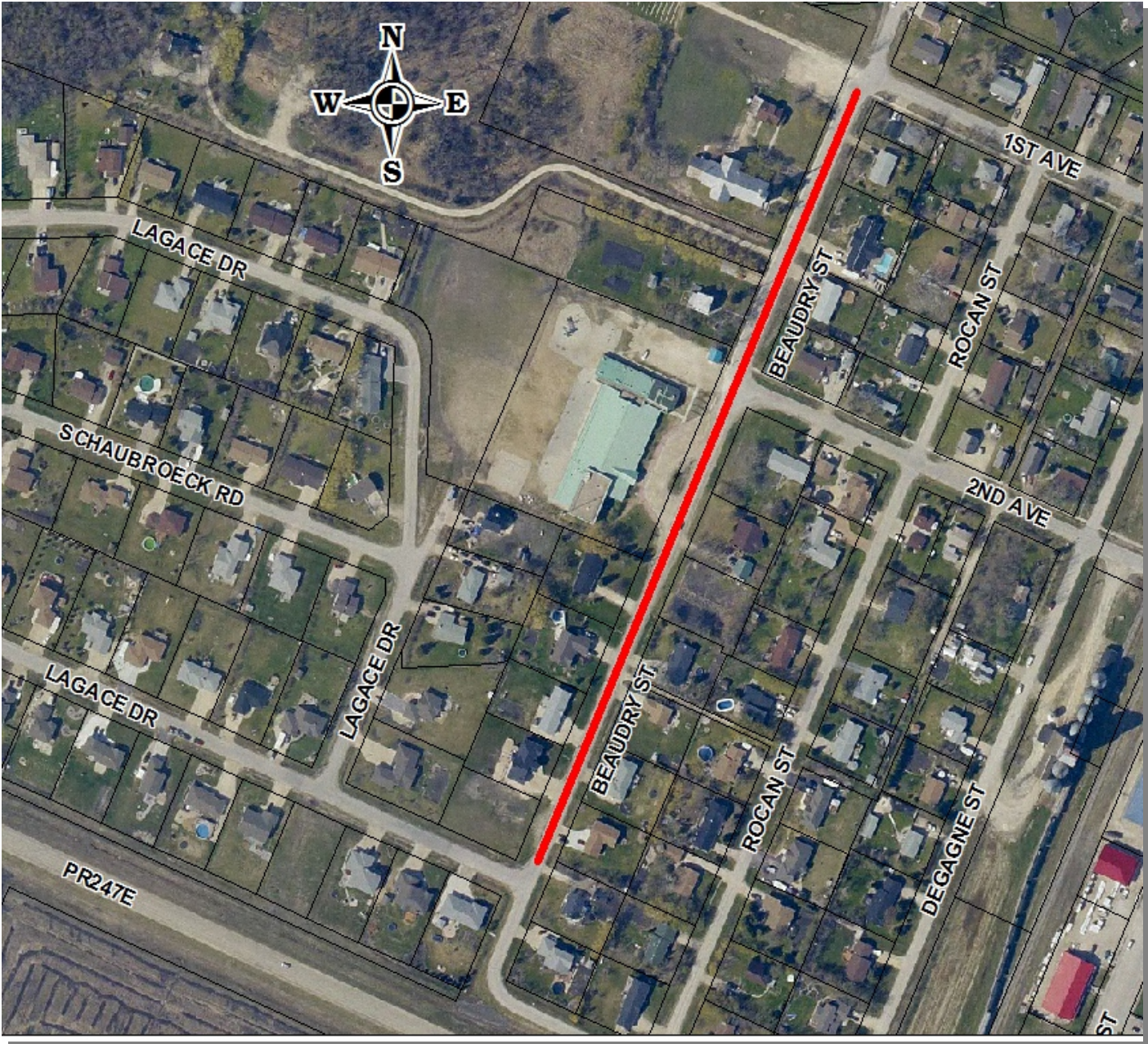
“D. Hrehirchuk

Daryl Hrehirchuk, CMMA
Chief Administrative Officer

Read a First time this 25th day of February A.D., 2025
Read a Second time this 11th day of March, A.D., 2025
Read a Third time this 11th day of March, A.D., 2025

Schedule “A” to By-Law No. 1/25

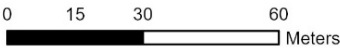
La Salle School, 43 Rue Beaudry, La Salle



J.A. Cuddy School, 5 Main Street, Sanford



Map
Rural Municipality of Macdonald
Date: 11/30/2022



Sanford Collegiate, 130 Blythefield Road, Sanford



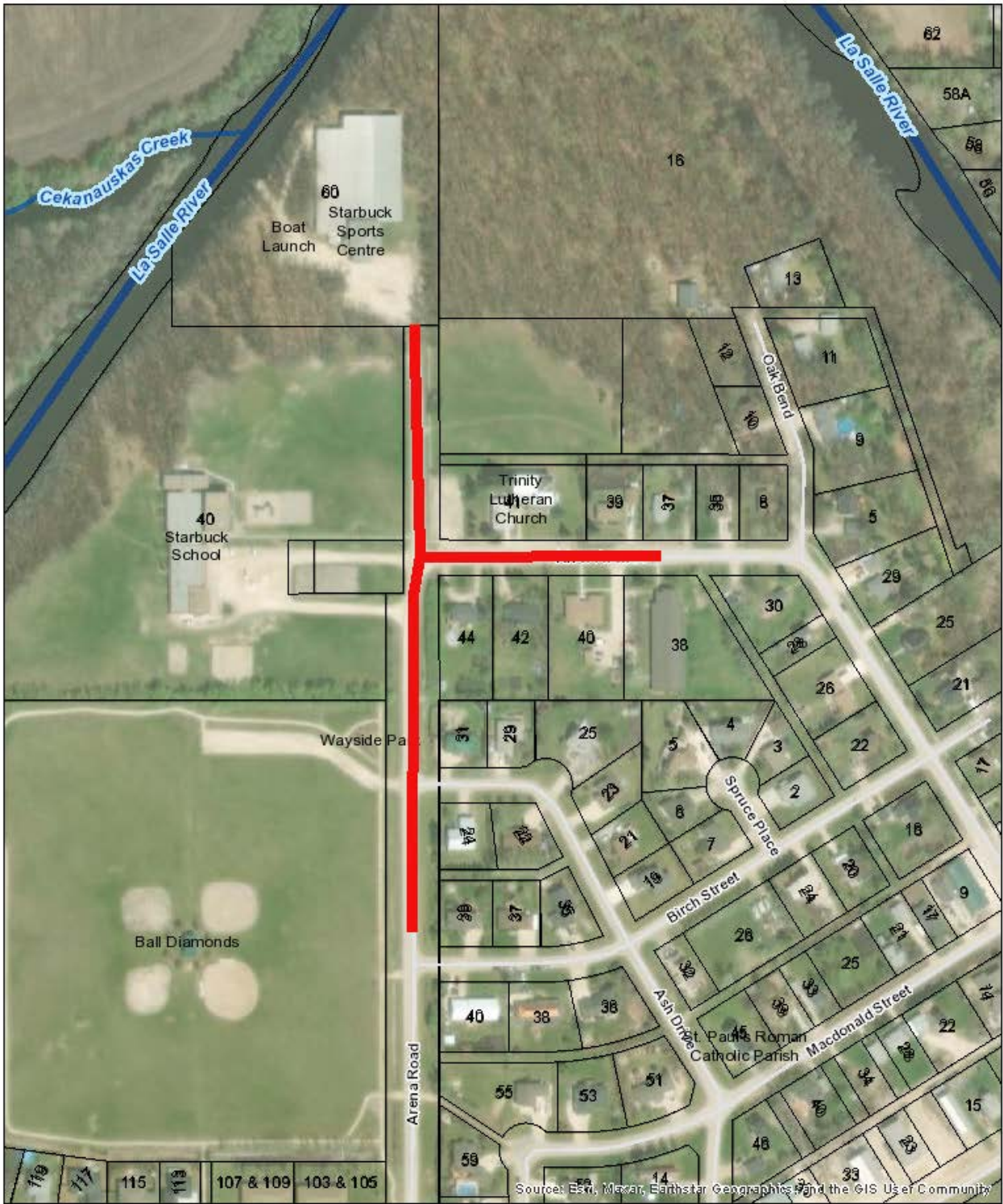
Oak Bluff Community School, 155 Bur Oak Boulevard



ArcGIS Web Map
Rural Municipality of Macdonald
Date: 1/31/2025



Starbuck School, 40 Arena Road, Starbuck



ArcGIS Web Map
Rural Municipality of Macdonald
Date: 1/21/2025

